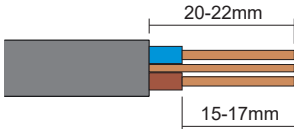


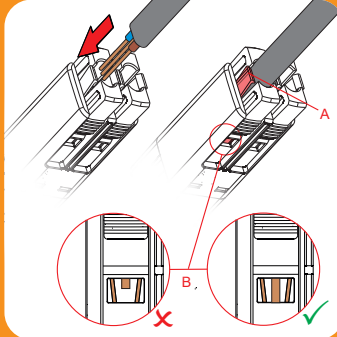
# Quickwire

## T-Connector Socket Connection

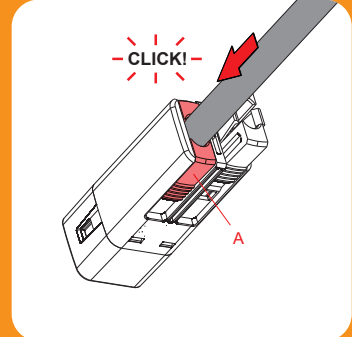


1. Strip cable. We recommend using Quickwire cable strippers (part no. QFKZ-01).

**Note:** Although it's possible to use other strippers, Quickwire strippers provide perfect strip lengths with minimum effort – Two quick strips with no need to splay conductors after stripping.



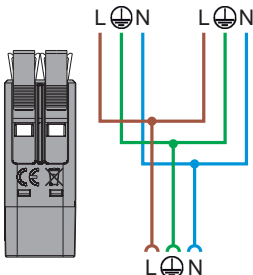
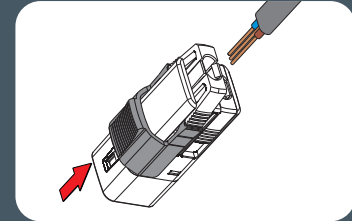
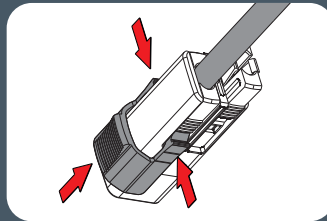
2. Align prepared cable and guide into outlet, until resistance is met. At this stage check sheath is within cord grip (A) and conductors are visible through windows (B).



3. Continue to push cable until shuttle snaps into place (A). Repeat process for other outlet or push in unused shuttle.

## Disconnection

Mount removal tool and place thumb on thumb grip. Use other hand to locate side arms beneath the snaps. Push removal tool to force shuttle out and release cable.



Rating Supply Voltage	250V~ 16A (Overcurrent protection limited to 16A)
Poles	3 - pole
Cable Entry	2 x 1.0mm <sup>2</sup> – 1.5mm <sup>2</sup> Twin & Earth CPC Cable (6242Y or 6242B), Solid cores (Class 1)
Termination	Utilizes rapid Quickwire push in technology
Cord Grip	Fully automatic
Conductor Size	1.0mm <sup>2</sup> – 1.5mm <sup>2</sup> Twin & Earth CPC Cable (6242Y or 6242B), Solid cores (Class 1)
Dimensions	23mm x 24mm x 60mm (fits through a 30mmØ hole)
IP Rating	IP30
Standards	Pending

Patent pending PCT/GB2016/053627 Reg.Design.6093626

This product is designed for lighting installations only.  
Overcurrent protection is limited to 16A max.  
Circuit to be protected by 16A MCB max.



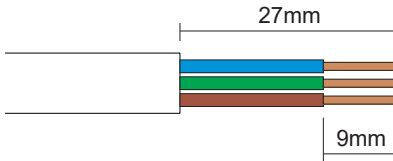
+44 (0)1183 840025 | [Info@quickwire.co.uk](mailto:Info@quickwire.co.uk) | [www.quickwire.co.uk](http://www.quickwire.co.uk)

Quickwire Limited, 6 Tavistock Industrial Estate, Ruscombe Lane, Twyford, Berkshire RG10 9NJ, UK

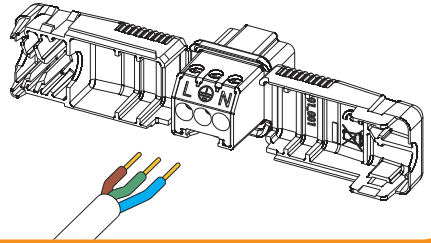
A flexconnectors Company

# Quickwire

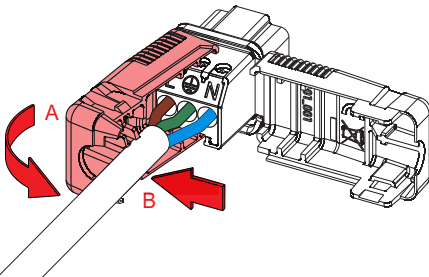
## T-Connector Plug Connection



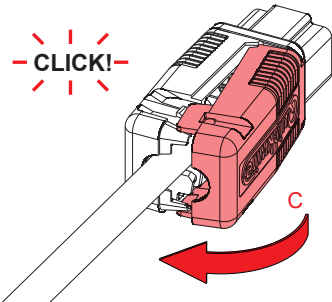
1. Strip cable. We recommend using Quickwire cable strippers (part no. QFKZ-01).




2. With plug covers fully open, terminate cable.



3. Close just cover side which includes cord grip (A), then push cable firmly into cord grip (B)



4. Bring other cover side around to meet and press both halves together until they click (C). Check both latches have engaged.

Rating Supply Voltage	250V~ 16A (Overcurrent protection limited to 16A)
Poles	3 - pole
Cable Entry	1 x Flexible (Class 5/6 conductors) or 1 x Rigid (Class 1 conductors)
Conductor Size	0.5mm <sup>2</sup> – 1.5mm <sup>2</sup>
Termination	Screw terminals
Cord Grip size	Max. 8.0 Min. 4.0Ø
Dimensions	23mm x 24mm x 60mm (fits through a 30mmØ hole)
IP Rating	IP20 (When plugged in)
Standards	Pending
Reg.Design.6093627	
This product is designed for lighting installations only. Overcurrent protection is limited to 16A max. Circuit to be protected by 16A MCB max.	
CE 	

+44 (0)1183 840025 | [Info@quickwire.co.uk](mailto:Info@quickwire.co.uk) | [www.quickwire.co.uk](http://www.quickwire.co.uk)

Quickwire Limited, 6 Tavistock Industrial Estate, Ruscombe Lane, Twyford, Berkshire RG10 9NJ, UK

A flexconnectors Company